

SWIMWEAR
FASHION
WEEK | GRAN
CANARIA
MODA
CALIDA



WOMEN CASTING 2017

ESMA

DESIGN
ART DIRECTION
PRODUCTION
CASTING
EVENTS & FASHION SHOWS MANAGEMENT

Rambla Catalunya, 61 3º 1ª 08007 Barcelona +34 93 215 42 22
Claudio Coello, 32 Bajo Int. Izq. 28001 Madrid +34 91 605 96 18

www.esma.events esma@esma.events [Twitter](#) ESMA Events [Instagram](#) esma.events [YouTube](#) CSMA Events



SWIMWEAR FASHION WEEK
GRAN CANARIA MODA CÁLIDA 2017

SPECIAL BOOKING

ESMA

DESIGN
ART DIRECTION
PRODUCTION
CASTING

EVENTS & FASHION SHOWS MANAGEMENT

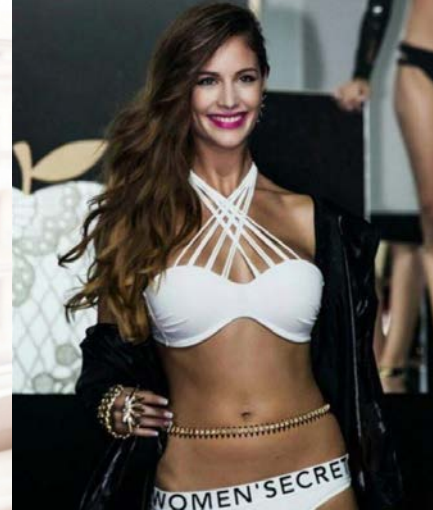
Rambla Catalunya, 61 B-11 08007 Barcelona +34 93 535 40 25
C/Arzobispo, 32 Bajo (at. Irg) 28001 Madrid +34 91 032 92 45

www.esma.com www.esma.com www.facebook.com/esma.com www.instagram.com/esma.com www.linkedin.com/company/esma.com

SWIMWEAR FASHION WEEK | GRAN CANARIA MODA CÁLIDA



SWIMWEAR
FASHION
WEEK | GRAN
CANARIA
MODA
CÁLIDA



DESIRÉ CORDERO



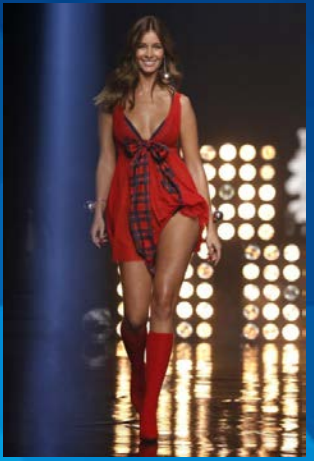
ESPAÑOLA - 1'78 - 90/62/92 - 38

ESMA

Campañas: Yamamay, School Rider, Majorica, Guess

Editoriales: HOLA, Clara, Mia, X00W Magazine, Vanitatis, Divinity Mag, Divuit, La Sevillana.

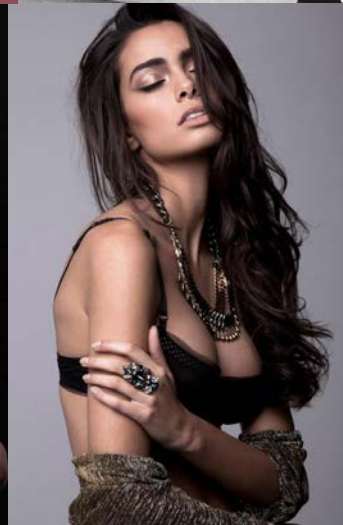
Desfiles: 080 Fashion Week, Barcelona Bridal Week, Convención Women'Secret, Ibiza Fashion Week & Sevilla Fashion Week, Guess Fashion Show, Gran Canaria Moda Cálida, Charo Azcona, Women'Secret 2016.



SWIMWEAR FASHION WEEK | GRAN CANARIA MODA CALIDA



JOANA SANZ



ESPAÑOLA (CANARIA) - 1'80 - 86/61/90 - 39

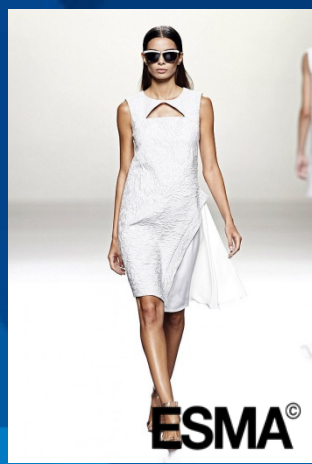
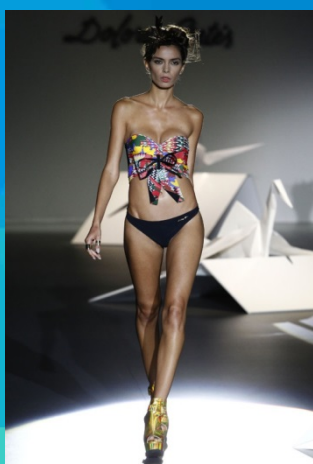
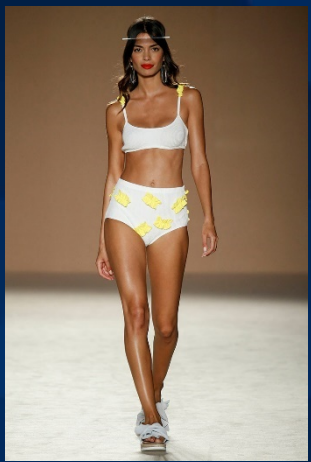
ACTUAL PAREJA DEL FUTBOLISTA DE LA JUVENTUS, DANI ALVES

ESMA

Campañas: Hispanitas, H&M, Jimmy Choo.

Editoriales: ELLE, Lookbook Bershka, Lookbook Hispanitas, Lookbook Cora Swimwear.

Desfiles: MBFWM, Gran Canaria Moda Cálida, Tenerife Moda, Women Secret, Desigual, Swaroski, Passionata, Pasarela Gaudí Novias, 080 Barcelona Fashion, Performance Women'Secret.



SWIMWEAR GRAN CANARIA MODA CALIDA

ESMA®

SWIMWEAR
FASHION
WEEK | GRAN
CANARIA
MODA
CALIDA



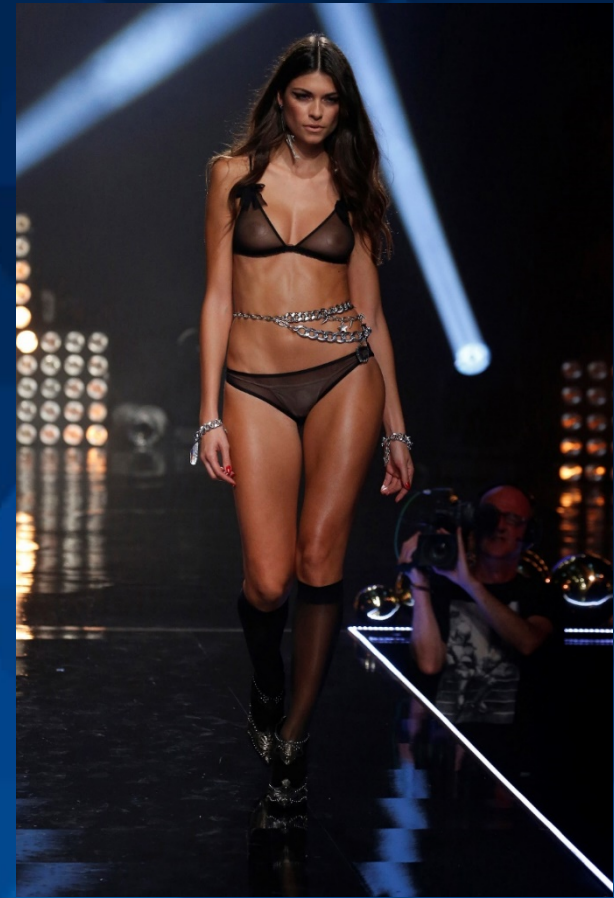
LINDA MORSELLI



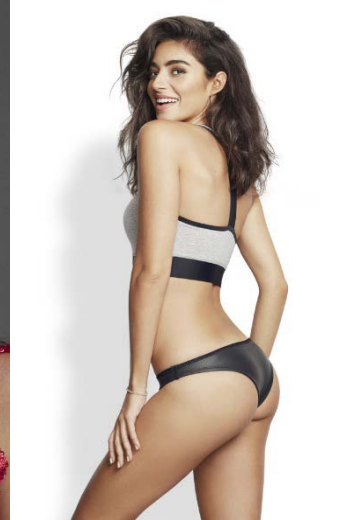
ITALIANA - 1'78 - 84/62/91 - 40
ACTUAL PAREJA DEL PILOTO DE FÓRMULA 1, FERNANDO ALONSO

Editoriales: Sports Week.
Desfiles: Women'Secret.

ESMA



SWIMWEAR FASHION WEEK | GRAN CANARIA MODA CALIDA



ROCÍO CRUSSET



ESPAÑOLA - 1'76 - 87/62/89 - 39

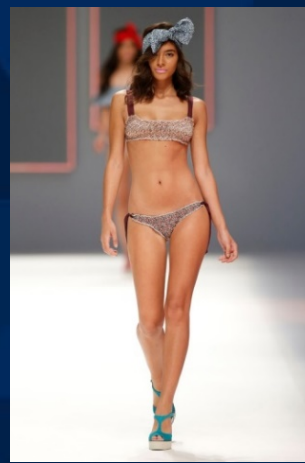
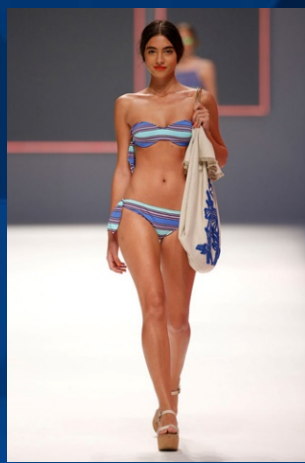
ESMA

HIJA DE MARILÓ MONTERO Y PACO HERRERA. ACTUAL PAREJA DEL MODELO, JUAN BETANCOURT

Campañas: Brownie, Springfield, Boho.

Editoriales: Vogue, Glamour, Mujer Hoy, Hola, Telva, Cosmopolitan, Women's Health, Blue Mag, Elle Fashion, Harper's Bazaar.

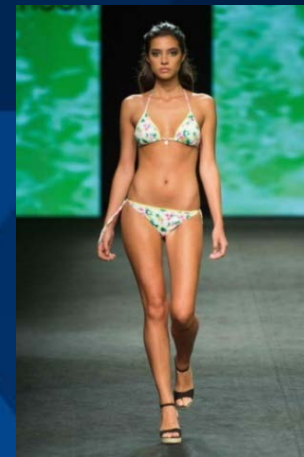
Desfiles: MBFWM, Swimwear Fashion Week, Gran Canaria Moda Cálida, 080 Barcelona Fashion, Barcelona Bridal Week.



ION FIZ



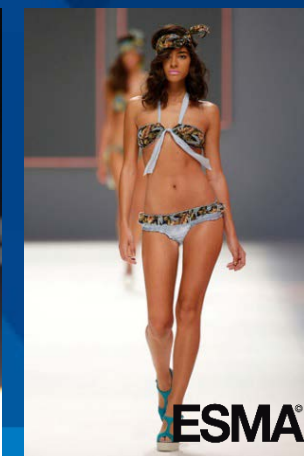
ROBERTO TORRETA



SWIMWEAR FASHION WEEK | GRAN CANARIA MODA CALIDA



ION FIZ



ESMA®

SWIMWEAR FASHION WEEK
GRAN CANARIA MODA CÁLIDA 2017

CASTING GENERAL

ESMA

DESIGN
ART DIRECTION
PRODUCTION
CASTING

EVENTS & FASHION SHOWS MANAGEMENT

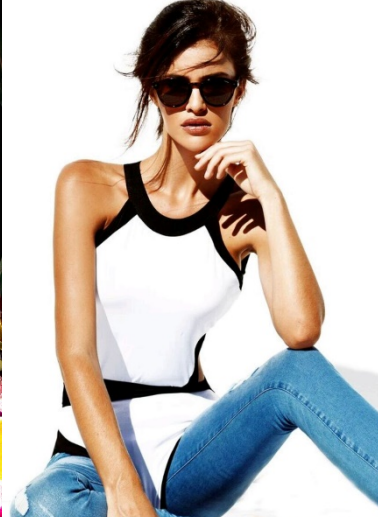
Rambla Catalunya, 61 B-11 08007 Barcelona +34 93 515 40 25
Calle de Oseta, 32 Bajo (at. Irg) 28001 Madrid +34 91 032 92 45

www.esma.com www.esma.com www.facebook.com/esma.com www.instagram.com/esma.com www.linkedin.com/company/esma.com

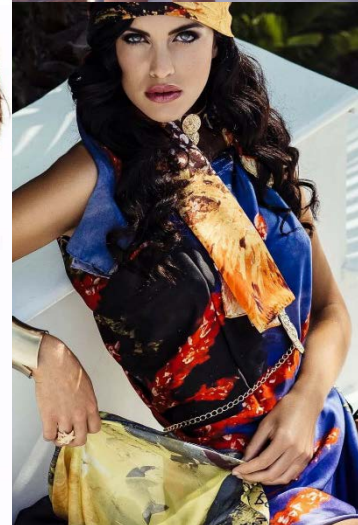
SWIMWEAR FASHION WEEK | GRAN CANARIA MODA CÁLIDA



SWIMWEAR
FASHION
WEEK | GRAN
CANARIA
MODA
CALIDA



ALBA ROMAN



ESPAÑOLA (CANARIA) - 1'80 - 90/62/91 - 41

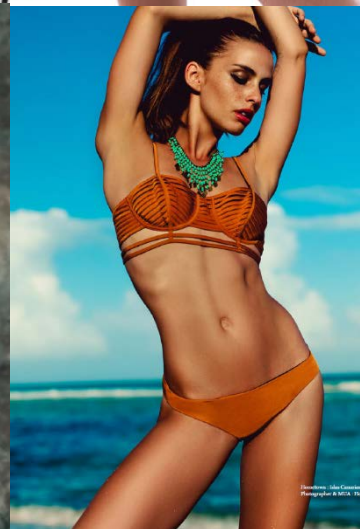
ESMA



SWIMWEAR
FASHION
WEEK | GRAN
CANARIA
MODA
CÁLIDA



ALICIA MEDINA



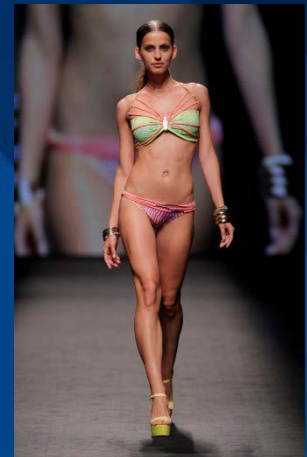
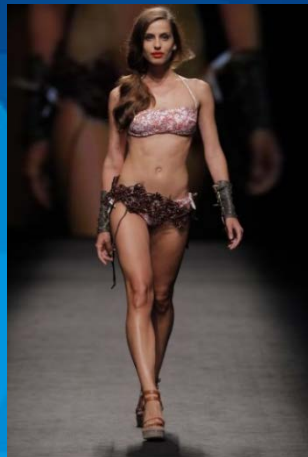
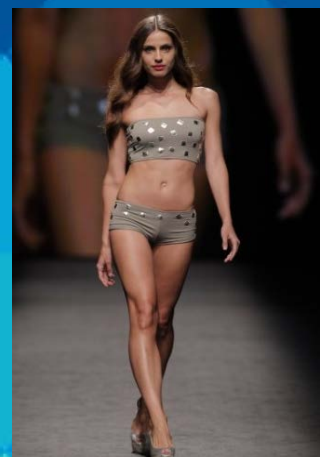
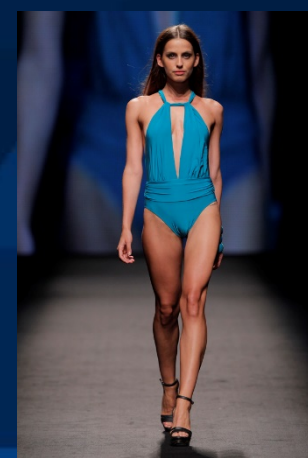
ESPAÑOLA (CANARIA) - 1'76 - 85/61/89 - 39

ESMA

Campañas: Hawkers.

Editoriales: Fantastic Magazine, Fault Magazine, Woman Spain, Telva, La Vanguardia, Siempre Mujer.

Desfiles: Gran Canaria Moda Cálida, Women Secret, Gaudí Novias.



SWIMWEAR
FASHION
WEEK | GRAN
CANARIA
MODA
CÁLIDA



ARÁNZAZU ESTEVEZ



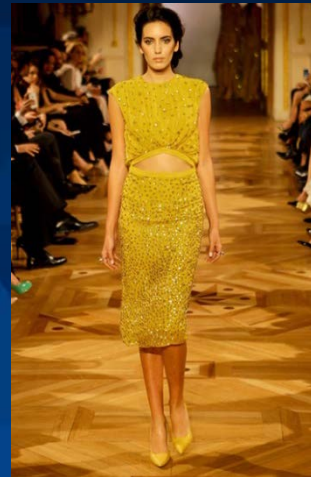
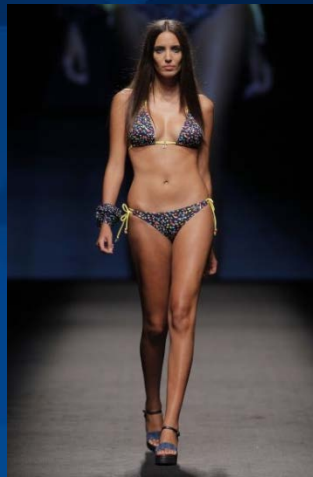
ESPAÑOLA (CANARIA) - 1'81 - 85/64/91 - 41

ESMA

Campañas: Gabriel Crossier, Fulvio Maiani.

Editoriales: Stylo Magazine, C7, Vanguard Magazine.

Desfiles: Gran Canaria Moda Cálida, Tenerife Moda (FEBODA), Jóvenes Diseñadores de Tenerife, Aldo Coppola.



SWIMWEAR FASHION WEEK | GRAN CANARIA MODA CALIDA



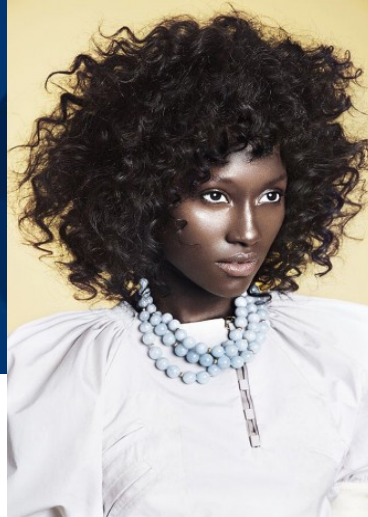
ASSI



ESPAÑOLA (CANARIA) - 1'80 - 85/60/92 - 40/41

ESMA

SWIMWEAR
FASHION
WEEK | GRAN
CANARIA
MODA
CÁLIDA



AYA GÜEYE

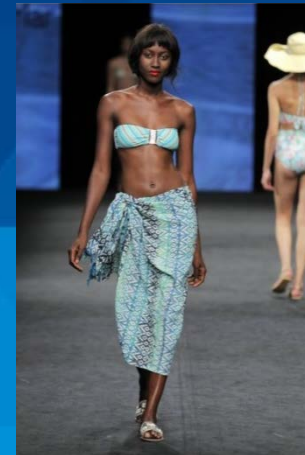
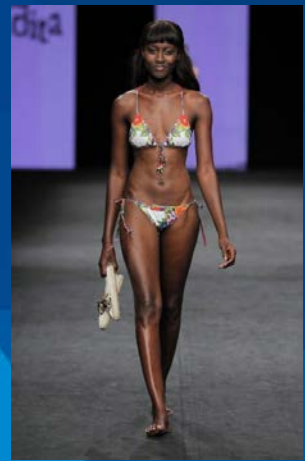
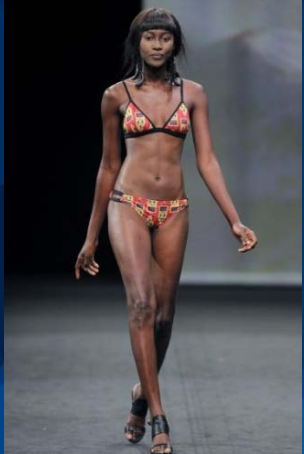


ESPAÑOLA - 1'80 - 83/58/90 - 40

ESMA

Lookbook: Sidecar.

Desfiles: Valencia Fashion Week, MMOB Shows, Presentación de la campaña PV15 #megustoWS de Women'Secret Marbella, Convención Grupo Cortefiel SS15, Barcelona Bridal Week, Moda Cálida 2015.



SWIMWEAR FASHION WEEK | GRAN CANARIA MODA CALIDA



BEGOÑA MARTÍN



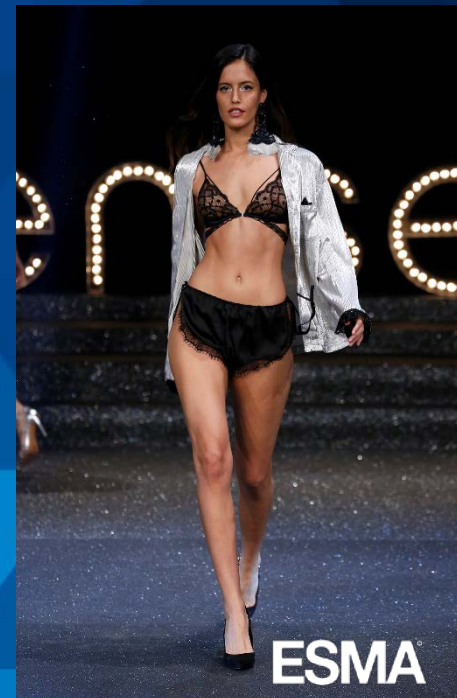
ESPAÑOLA - 1'78 - 83/62/91 - 40

ESMA

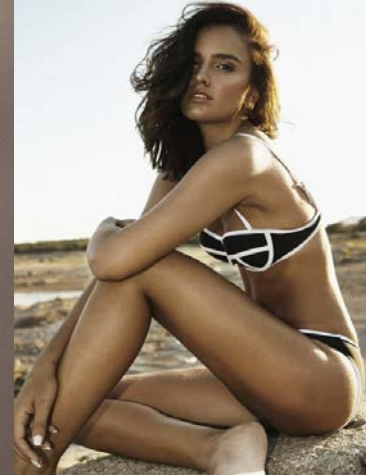
Campañas: Fashion Film con GLAMOUR para L'Oréal.

Editoriales: Glamour, Fuera de Serie.

Desfiles: Convención Grupo Cortefiel, Women'Secret #wearesexywomen, MFSHOWS, La Perla, Pepa Salazar.



SWIMWEAR
FASHION
WEEK | GRAN
CANARIA
MODA
CALIDA



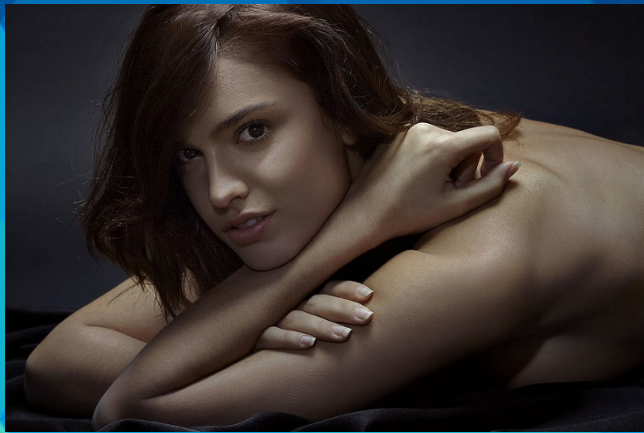
BELÉN SÁNCHEZ



ESPAÑOLA - 1'76 - 87/60/89 - 40

Desfiles: Convenciones Grupo Cortefiel.

ESMA[®]



SWIMWEAR | GRAN
FASHION | CANARIA
WEEK | MODA
CALIDA

ESMA

SWIMWEAR
FASHION
WEEK | GRAN
CANARIA
MODA
CÁLIDA



CAROLINA GONZÁLEZ



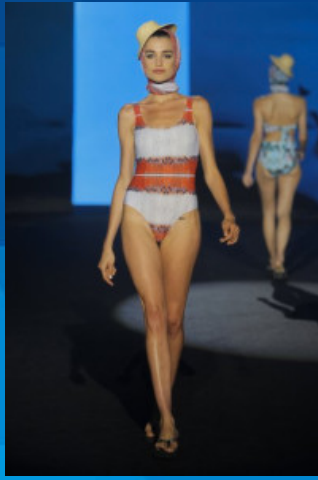
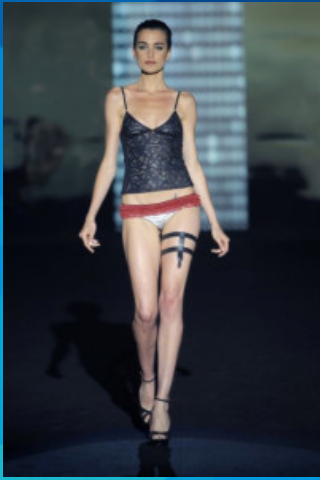
ESPAÑOLA (CANARIA) - 1'80 - 85/64/92 - 41

Campañas: Latino Jeans.

Editoriales: Mia Magazine, GP Magazine, Yoox, Vanidad, Tape Magazine, Papercut.

Desfiles: Emporio Armani, Gran Canaria Moda Cálida, Springfield, Naf Naf, Martin Grant, Desfiles Jóvenes Diseñadores de Tenerife Coast Weber, Lorena Antoniazzi, Don Dup, Stella Jeans, entre otros.

ESMA



SWIMWEAR FASHION WEEK | GRAN CANARIA MODA CALIDA



DASURY



ESPAÑOLA (CANARIA) - 1'76 - 83/61/90 - 39

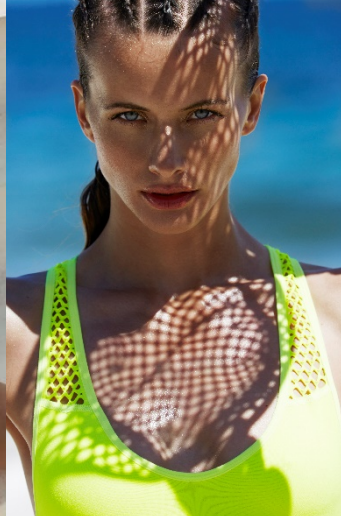
Desfiles: Gran Canaria Moda Cálida, Bridal Collection Gran Canaria Moda Calida

ESMA

SWIMWEAR
FASHION
WEEK | GRAN
CANARIA
MODA
CALIDA



DOMINIKA KUCHAROVA



ESLOVACA - 1'77 - 89/60/89 - 39

Editoriales: Elle Czech , Harpers Bazaar Czech , Dolce Vita Czech, DV magazine, Dazed & Confused, Elle Sweden, Jalouse mag
Principales trabajos : Cavalli lookbook , Dolce & Gabbana Pre-Fall Campaign

ESMA

SWIMWEAR FASHION WEEK | GRAN CANARIA MODA CALIDA



GODELIV

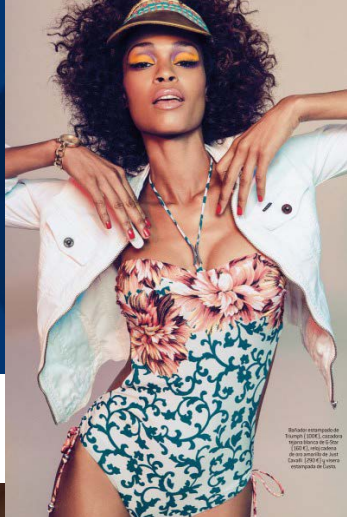


Foto: Esteban de Torres (2014), Lucía López (2014), Lucía López (2014), Lucía López (2014), Lucía López (2014), Lucía López (2014), Lucía López (2014), Lucía López (2014), Lucía López (2014), Lucía López (2014)



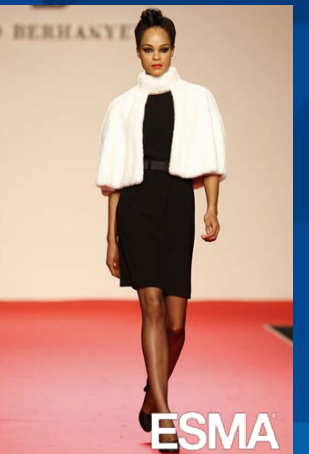
ESPAÑOLA - 1'80 - 85/60/90 - 41

ESMA

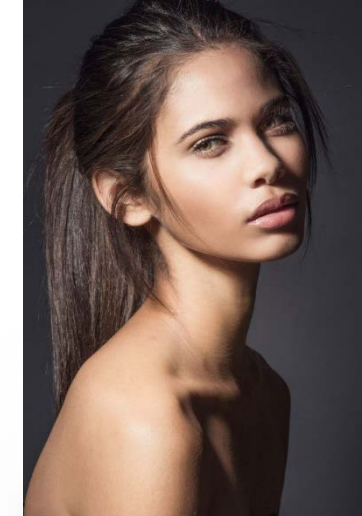
Campañas: Cocoa, Desigual, Isabel de Pedro, Selvatgi, El Corte Inglés, TCN.

Editoriales: Yo Dona, El País, Telva, Woman y Bazaar Grecia.

Desfiles: Hannibal Laguna, Esther Rodríguez, Model Novias, Patricia Avedaño, Pepe Botella, Yolán Cris, Francis Montesinos, 080 Barcelona Fashion, Gaudí Novias 2010, MBFWM.



SWIMWEAR
FASHION
WEEK | GRAN
CANARIA
MODA
CÁLIDA



KELIE SANTOS

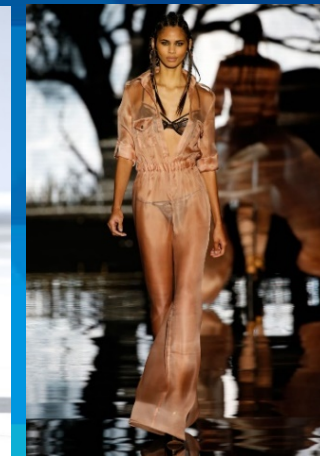
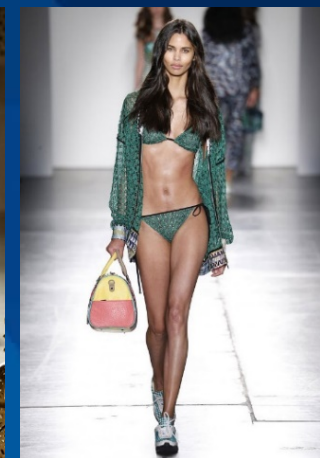
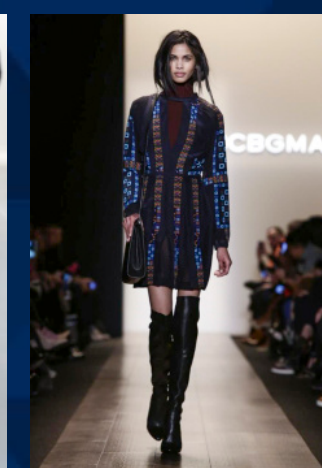


BRASILEÑA - 1'80 - 83/60/90 - 40

Editoriales: Tetu.

Desfiles: Colcci, Ellus, Etam, Naeem Khan, Martin Grant, Hervé Léger, August Getty, BCBG Max Azria, Zuhair Murad Haute Couture, Jean Paul Gaultier, Stephane Rolland Haute Couture, Versace, Greg Lauren, Reem Acra, Christiano Siriano, 080 Barcelona Fashion, Georges Hobeika Couture, MBFWM, Gran Canaria Moda Cálida, Women'Secret.

ESMA[®]



SWIMWEAR GRAN
FASHION CANARIA
WEEK MODA
CALIDA

ESMA

SWIMWEAR | GRAN
FASHION | CANARIA
WEEK | MODA
CÁLIDA



LOTTA KORKALA

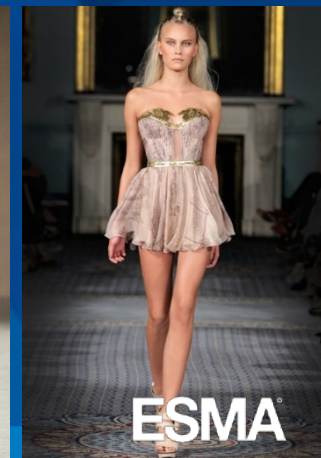
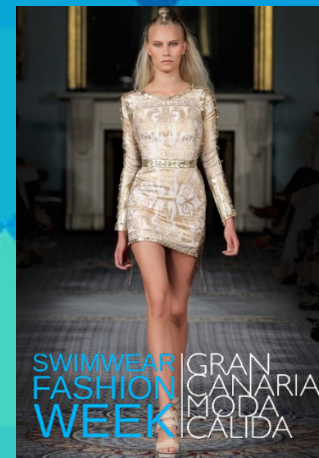
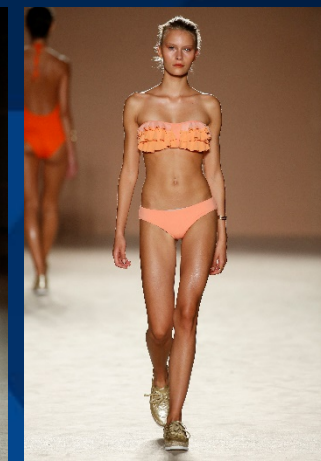
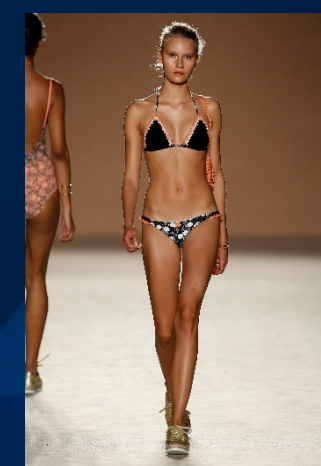
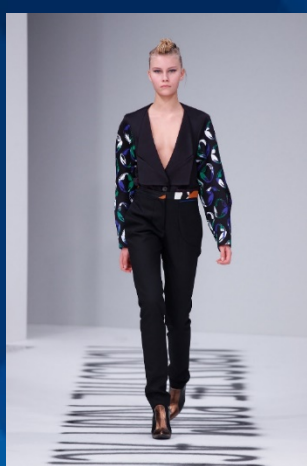


FINLANDESA - 1'78 - 83/61/89 - 38,5

Editoriales: Tetu.

Desfiles: Colcci, Ellus, Etam, Naeem Khan, Martin Grant, Hervé Léger, August Getty, BCBG Max Azria, Zuhair Murad Haute Couture, Jean Paul Gaultier, Stephane Rolland Haute Couture, Versace, Greg Lauren, Reem Acra, Christiano Siriano, 080 Barcelona Fashion, Georges Hobeika Couture, MBFWM, Gran Canaria Moda Cálida, Women'Secret.

ESMA[®]



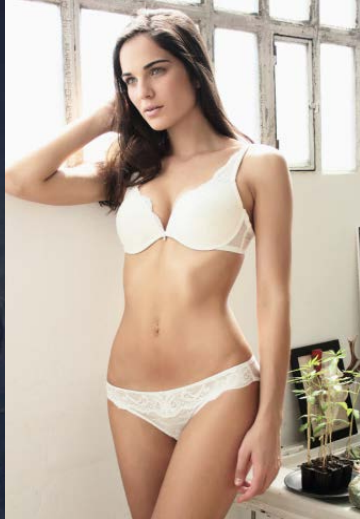
SWIMWEAR | GRAN CANARIA
FASHION WEEK | MODA CALIDA

ESMA

SWIMWEAR
FASHION
WEEK | GRAN
CANARIA
MODA
CÁLIDA



MARINA GARCIA



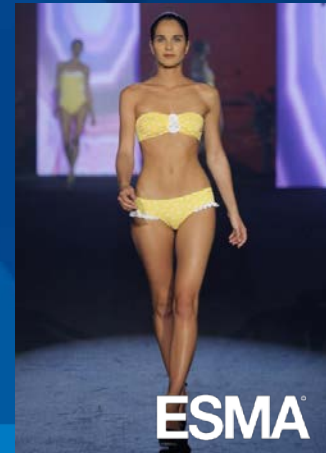
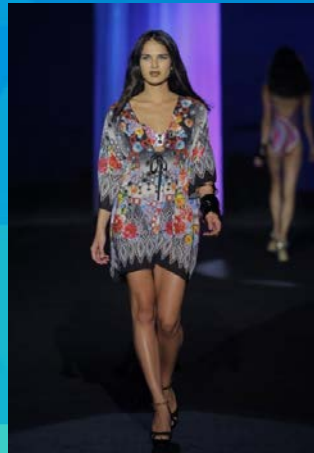
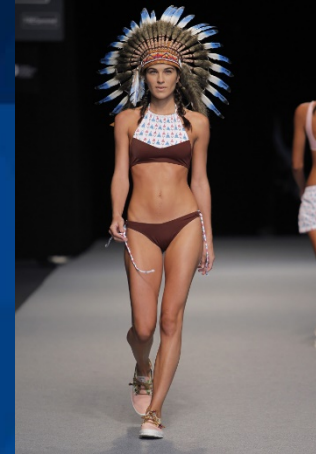
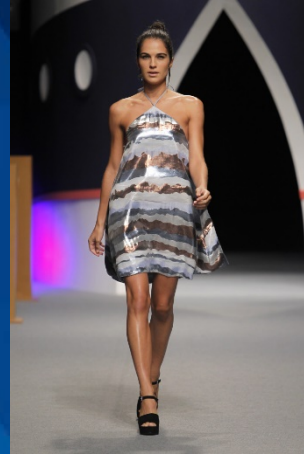
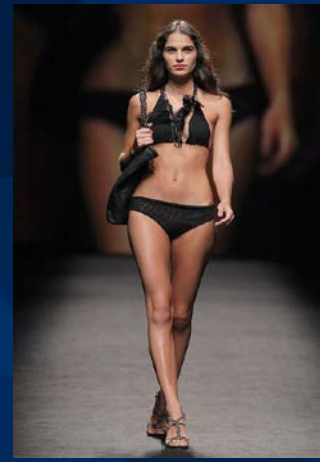
ESPAÑOLA (CANARIA) - 1'80 - 83/61/90 - 41

ESMA

Campañas: Vaska Exposure, Rosa La Cave.

Editoriales: Vanguard magazine, Fashion & Friends.

Desfiles: 080 Barcelona Fashion, Women'Secret, Gran Canaria Moda Cálida, Tenerife Moda.



SWIMWEAR FASHION WEEK | GRAN CANARIA MODA CALIDA

ESMA

SWIMWEAR
FASHION
WEEK | GRAN
CANARIA
MODA
CÁLIDA



RAQUEL PALOMO

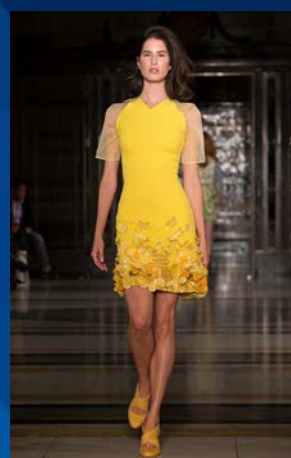


ESPAÑOLA (CANARIA) - 1'76 - 85/62/90 - 39

ESMA[®]

Editoriales: Neo2, Exclusive, Telva, Urban.

Desfiles: Gran Canaria Moda Cálida, Miguel Palacio, Anjara Garcia, Kiko Font, Alvarno, Blumarine.



SWIMWEAR
FASHION
WEEK | GRAN
CANARIA
MODA
CÁLIDA



SARA SAN MARTIN

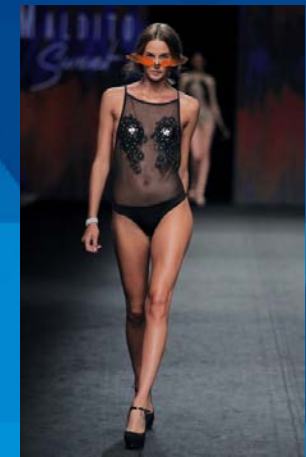


ESPAÑOLA (CANARIA) - 1'79 - 84/63/91 - 39

ESMA

Editoriales: In Cover, Nok, Sicky Magazine.

Desfiles: Ego, Alvarno, Hoss Intropia, Boda Book, Hannibal Laguna, Women Secret Dark Seduction, Pepe Jeans, Gran Canaria Moda Cálida, MBFWM, Women'Secret El Musical #wearesexywomen.



ESMA

DESIGN
ART DIRECTION
PRODUCTION
CASTING

EVENTS & FASHION SHOWS MANAGEMENT

Rambla Catalunya, 61 3º 1ª 08007 Barcelona +34 93 215 42 22
Claudio Coello, 32 Bajo Int. Izq. 28001 Madrid +34 91 605 96 18

www.esma.events esma@esma.events  ESMA Events  esma.events  ESMA Events

SWIMWEAR
FASHION
WEEK | GRAN
CANARIA
MODA
CALIDA

